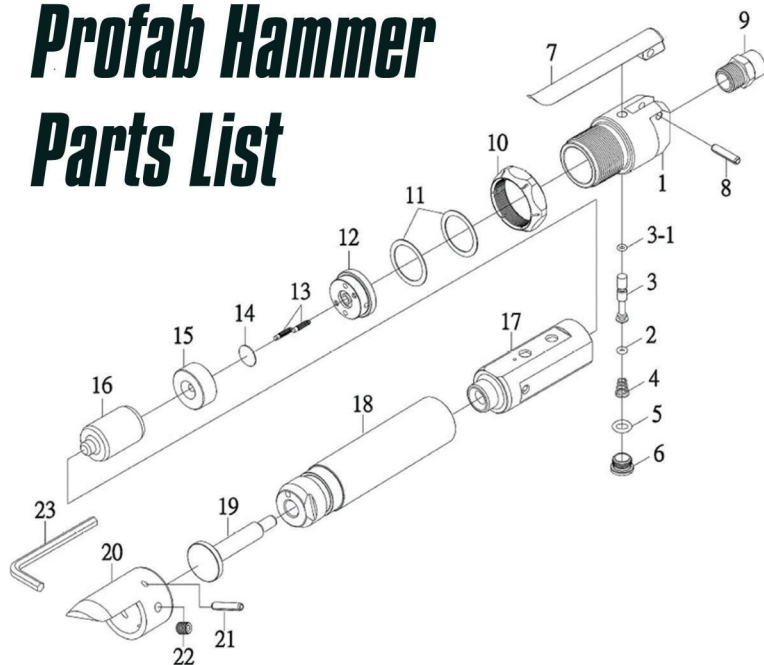


The Profab Line

Profab Hammer Parts List



Model 1600 PROFAB HAMMER

INDEX NO.	DESCRIPTION	REQ'D NO.	INDEX NO.	DESCRIPTION	REQ'D NO.
01	Back head	1	12	Rear Valve Block	1
02	O-Ring	1	13	Pin	2
03	Throttle Valve	1	14	Valve	1
03-1	O-Ring	1	15	Front Valve Block	1
04	Spring	1	16	Piston	1
05	O-Ring	1	17	Barrel Sleeve	1
06	Valve Cap	1	18	Barrel	1
07	Lever	1	19	Driver	1
08	Spring Pin	1	20	Guide	1
09	Hose Adapter	1	21	Spring Pin	2
10	Lock Ring	1	22	HEX. Screw	2
11	Alignment Shim	2	23	4mm HEX. Wrench	1

Profab Hammer Maintenance Instructions (model 1600)



REPLACING THE O-RINGS AND SPRING:

Use a flat-head screwdriver as shown to disassemble the valve cap (part #06). Replace o-rings (parts #2, #03-1 and #4) and spring (part #05).



REPLACING THE MAIN VALVE (part #14) AND PISTON (part #16):

1. Use a vise to hold the hammer as shown.
2. With an open-ended wrench, loosen the lock ring (part #10) by turning clockwise.
3. Use the open-ended wrench to turn the barrel (part #18) counter-clockwise until it separates from the back head (part #1), then replace the main valve (part #14) and piston (part #16).



REPLACING THE DRIVER:

Use a center punch as shown to disassemble the spring pin (part #21), then replace the driver (part #19).

INCREASE YOUR PRODUCTIVITY