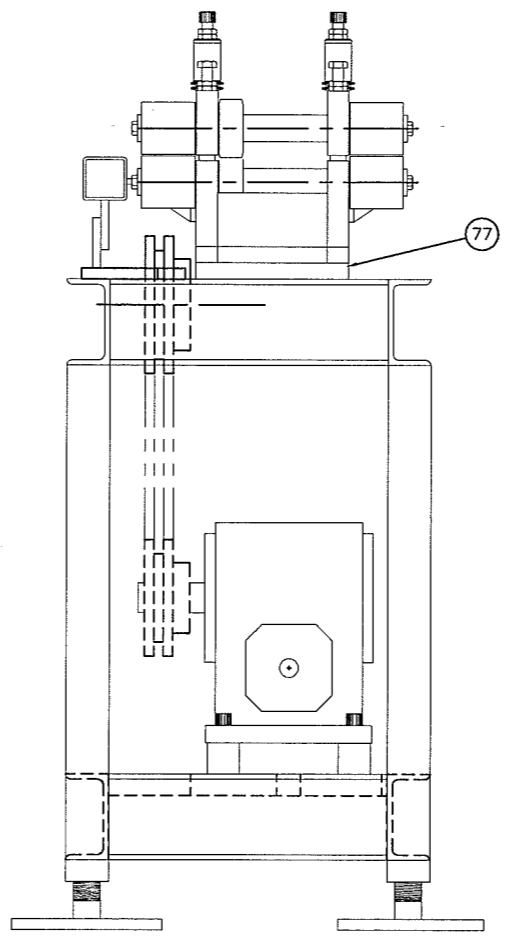
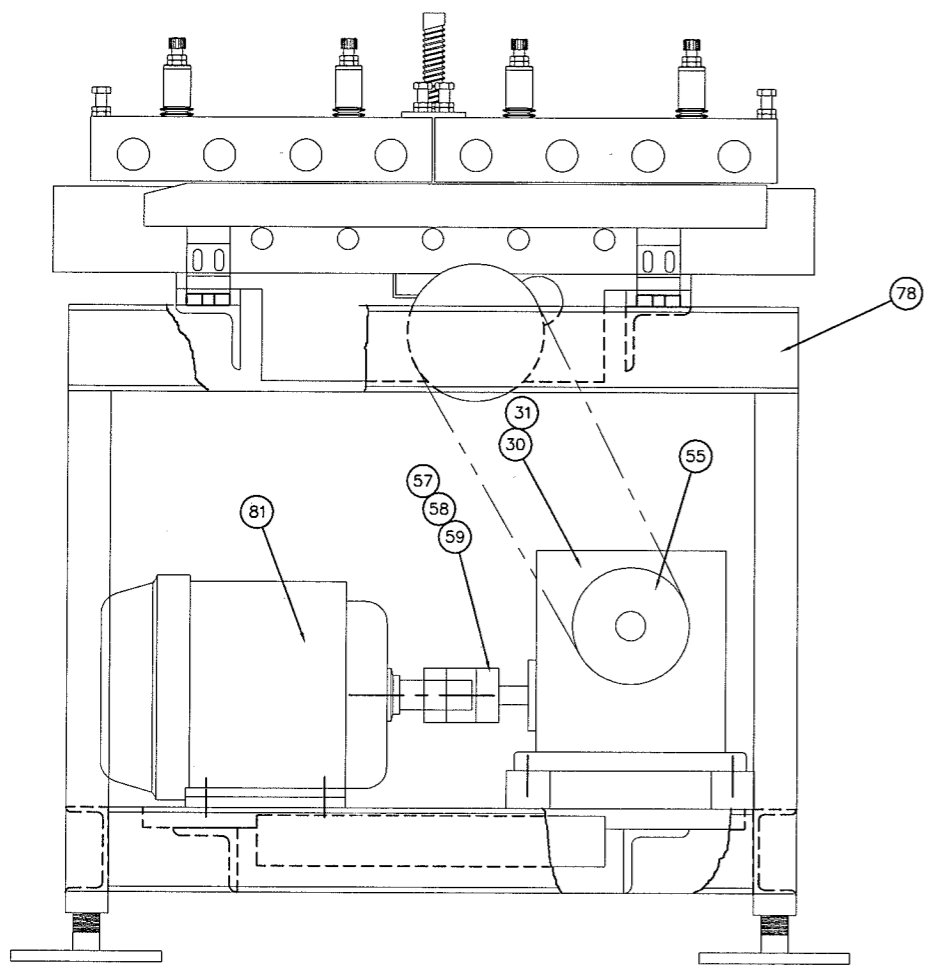


D		DEL 1089328 AND 1089329, ADD(2)602-8770-01		L. REEK 05/19/2010	REVISION	NAME-DATE
E <td colspan="2">ADD 526-0002 <td>T. COON 07/23/2010 <td>A <td>ADDED GREASE DUCT BYPASS OPTION S. KERSKA 04/09/2010</td> </td></td></td>		ADD 526-0002 <td>T. COON 07/23/2010 <td>A <td>ADDED GREASE DUCT BYPASS OPTION S. KERSKA 04/09/2010</td> </td></td>		T. COON 07/23/2010 <td>A <td>ADDED GREASE DUCT BYPASS OPTION S. KERSKA 04/09/2010</td> </td>	A <td>ADDED GREASE DUCT BYPASS OPTION S. KERSKA 04/09/2010</td>	ADDED GREASE DUCT BYPASS OPTION S. KERSKA 04/09/2010
F <td colspan="2">DELETED: 1075934-14 (2), 592283 (2) & 7895-7 (2) <td>S. KERSKA 08/26/2010 <td>B <td>MOVED 1089229 TO GREAS DUCT BYPASS OPTION S. KERSKA 04/14/2010</td> </td></td></td>		DELETED: 1075934-14 (2), 592283 (2) & 7895-7 (2) <td>S. KERSKA 08/26/2010 <td>B <td>MOVED 1089229 TO GREAS DUCT BYPASS OPTION S. KERSKA 04/14/2010</td> </td></td>		S. KERSKA 08/26/2010 <td>B <td>MOVED 1089229 TO GREAS DUCT BYPASS OPTION S. KERSKA 04/14/2010</td> </td>	B <td>MOVED 1089229 TO GREAS DUCT BYPASS OPTION S. KERSKA 04/14/2010</td>	MOVED 1089229 TO GREAS DUCT BYPASS OPTION S. KERSKA 04/14/2010
					C <td>ADD INFEED OPTION BLOCK L. REEK 04/16/2010</td>	ADD INFEED OPTION BLOCK L. REEK 04/16/2010



67						
66	2	593333	HD MNTG BRKT FOR M-800TT-TA RO			EA
65						
64	1	572304	5/16 ALLEN KEY - LONG			EA
63	2	572047	CARR LANE CONE LOCATION BUSHIN			EA
62	1	572046	HANDLE, REVOLVING, CARR LANE			EA
61	2	572041	CARR LANE CONE LOCATOR PIN			EA
60	32	571008	SPRING, DISC, ROLEX Z16			EA
59	1	563008	FLEXIBLE COUPLING HALF L100 X			EA
58	1	563006	FLEXIBLE COUPLING HALF L100 X			EA
57	1	563002	FLEXIBLE COUPLING SPIDER			EA
56	2	531111	LINCOLN STRT.GREASE FITTING, D			EA
55	1	514275	SPKT DBL 60P 21T 1.375B 5/16K			EA
54	1	514260	SPKT,DBL,60P,25T,1.5B,3/BK,NO			EA
53	1	514009	MITER GEAR W/1 SS, 3/16 KEYWAY			EA
52	8	513095	1-1/4 END CAP WASHER (1/2" CTR			EA
51	8	513094	6 POST TAPPED 1/2-20			EA
50	7	511196	STEEL THRUST WASHER - TRC2031			EA
49	40	511195	1 1/4 END CAP WASHER			EA
48	4	511193	1 3/4 END CAP WASHER			EA
47	1	511178	WASHER, END-CAP, 2"			EA
46	7	511108	STEEL THRUST WASHER - TRB2031			EA
45	1	511085	BRG, FLNG, 2BOLT, 1" ID			EA
44	1	511079	ROTON 1 BALL NUT BEARING			EA
43	32	511078	AMPLEX WASHER (TT1709-01)			EA
42	2	511077	PEER 3/4" PILLOW BEARING ****			EA
41	23	511076-H	INNER RACE - HONED (1 X 1.25)			EA
40	6	511065	WASHER, THRUST, BRONZE, TW150			EA
39	1	511042	STEEL THRUST WASHER (TRB1220)			EA
38	2	511032	BEARING, THRUST, 2904			EA
37	2	511027-H	RACE, INNER, HONED, 1.5 X 1.75			EA
36	4	511026	BEARING, ROLLER, 28 X 37 X 16			EA
35	2	511025-H	RACE INNER,HONED,1.5 ID X 1.25			EA
34	16	511019-H	INNER RACE - HONED (1 X 1)			EA
33	7	511018-1	BEARING WITH OIL HOLE			EA
32	32	511018	BEARING (B2016)			EA
31	1	501267-1	LEESON 15:1 REDUCER			EA
30	1	501153	KIT, REDUCER BASE FOR 832 (W/B			EA
29	1	4995	SUPP. PLATE LEAD SCREW WELDMEN			EA
28	7	4994-1	IDLER GEAR			EA
27	1	4883	GEAR SPUR 8/10DP 24T 1.50B 3/8			EA
26	1	4820-3	LEAD SCREW SPACER			EA
25	8	4820-2	SPACER-LEAD SCRW 1-1/4ODX3/4ID			EA
24	1	4820-1	SPACER			EA
23	1	4663-1	BEARING BLOCK			EA
22	1	4651	TRANSFER SHAFT 1 1/2 RD X 9.			EA
21	1	4401-TA	SPINDLE-TURN AROUND HEAD STA4B			EA
20	7	4401	SPINDLE			EA
19	16	4267-4	SPACER - 3.750 LG.			EA
18	1	4224-24	TRANSFER SHAFT SPACER 2.87 LG.			EA
17	1	4224-23	TRANSFER SHAFT SPACER(3.75 LG)			EA
16	16	4211-H	19T-GEAR (HARD) 2 3/4 RD X 1.1			EA
15	4	4173-3	SPREADER			EA
14	32	4171	#11 WOODRUFF KEY 3/16, GROUND			EA
13	16	4170	#15 WOODRUFF KEY 1/4, GROUND			EA
12	7	4165-1	GREASE BOLT **** (3/8-24 X 3/			EA
11						
10						
9	1	1089228	M-800TT-TA TIE PLATE			EA
8	1	1078532-9	SPACER-PILLOW BLOCK MOUNT			EA
7	1	1078532-17	KEY-MITER GEAR			EA
6	1	1078531	HAND WHEEL SHAFT-TT HEAD			EA
5	1	1078530	MITER GEAR-TURN AROUND HEAD			EA
4	1	1078529	LEAD SCREW-TANDEM HD W/GLUE EX			EA
3						
2	1	1072563	8 HANDWHEEL - 3/4			EA
1	2	1070514	LEVELER GEAR			EA

INFEED GUIDE OPTION						
-13	RIGHT FLOW	820	2	11373R	INFEED GUIDE RIGHT FLOW 800TTA	EA
-12	LEFT FLOW	820	2	11373L	INFEED GUIDE LEFT FLOW 800TTA	EA

ROLL SET OPTION						
	STD 18GA PITTS	811	1	MR-PL-18T	18 GA.PITTS ROLLS-TRANSFER SYS	EA
	STD 20GA BUTTNLCK	810	1	MR-FB-20T	20 GA.FEMALE BL.ROLLS FOR 800T	EA

GREASE DUCT BYPASS OPTION							
-11	WITH BYPASS	806	4	T5091-3	BY-PASS ROLL-STA.#2,4,6,8	EA	
		805	4	5041-1	BUTTONLOCK FEMALE 20GA 6-7-8-B	EA	
		804					
		803	2	1089229-RFB	LOWER TIE PLATE MOUNT	EA	
		802	2	602-8770-01-00	GUARD, INFEED LEFT 800TT W/BYP	EA	
		801	2	593330	HOOD BYPASS FOR M-800TT-TA ROL	EA	
		800	8	11096	SPINDLE-BYPASS OPTION	EA	
-10	W/O BYPASS (STD)	803	2	1089229	LOWER TIE PLATE MOUNT M-800TT-	EA	
		802	2	593331	INFED & OUTFD FINGER GD M-800TT	EA	
		801	2	593329	HOOD, STD FOR 800TT-TA ROLLFOR	EA	
		800	8	4401	SPINDLE	EA	

82	1	526-0002-01-00	PROX MOUNT	EA
81	1	501031	MOTOR,5HP,208-460/3/60,TEFC,18	EA
80	1	9994	CLAMP - SIGNAL LEAD SCREW	EA
79	1	9920	MOUNT PLATE-FLANGE BEARING	EA
78	1	9919	FRAME W/DMNT 800U W/TRNARD.HD.	EA
77	2	9916	MOUNT PAD(800U-TT W/TRNARD HD)	EA
76	2	9912	BOTTOM SPNDL.HSG FIXED HD.(800	EA
75	1	9877	IDLER SHAFT - TURN-AROUND HEAD	EA
74	1	9876-1	UPPER SUPPORT PLATE-LEAD SCREW	EA
73	2	9872	LOWER TRANSFER UNIT	EA
72	4	9664	BEARING CAGE, UPPER	EA
71	7	9512	IDLER SHAFT	EA
70				EA
69	1	593334	FRONT PANEL FOR M-800TT-TA ROL	EA
68	4	593332	GUARD MNTG BRKTS (-800TT-TA RL	EA

DO NOT SCALE
TOLERANCES SPECIFIED BY DECIMAL PLACES
.0 ±.050
.00 ±.025
.000 ±.005
ANGLES ±.5°

ITEM QTY STOCK NO. DESCRIPTION QTY EACH

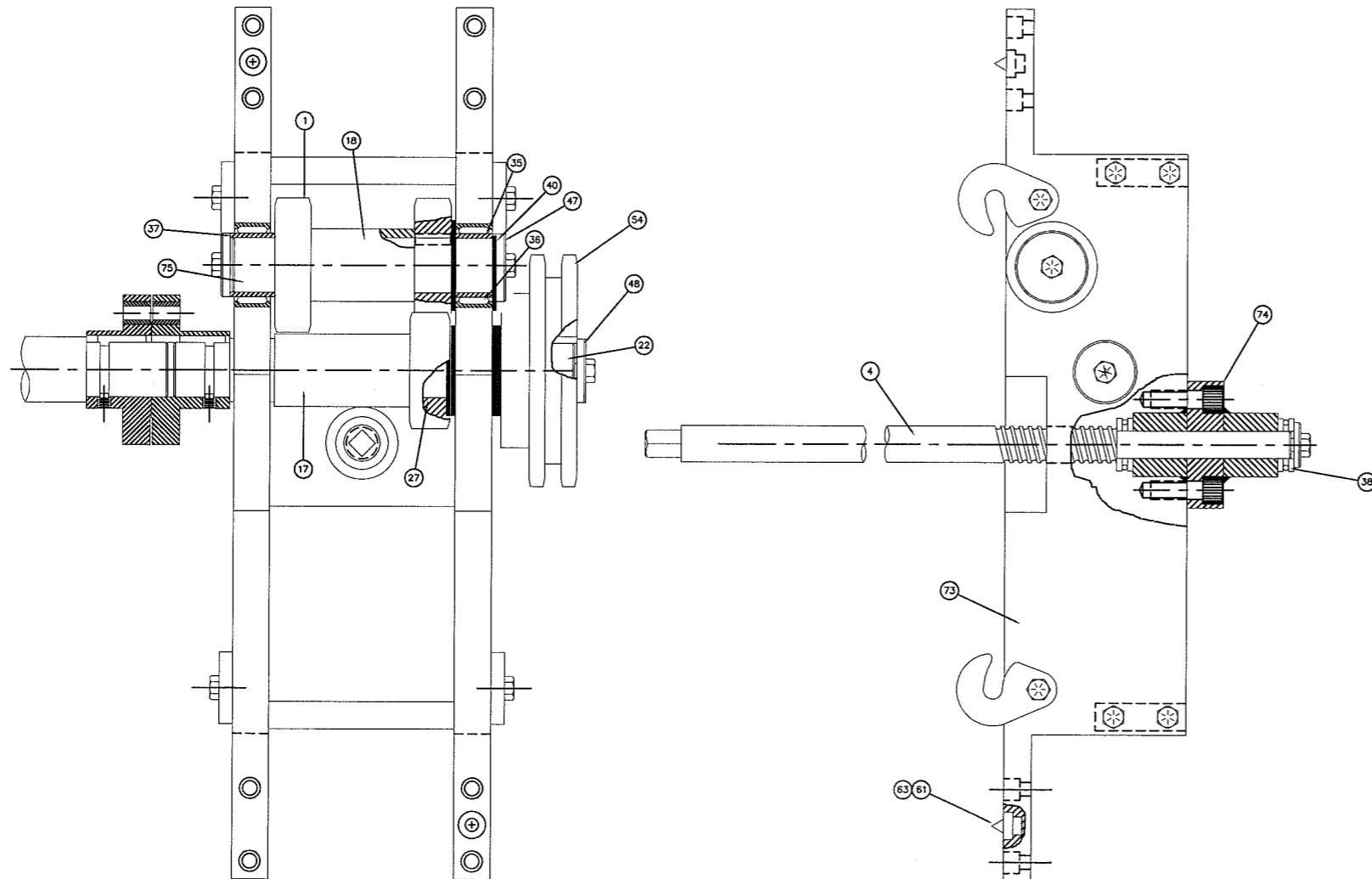
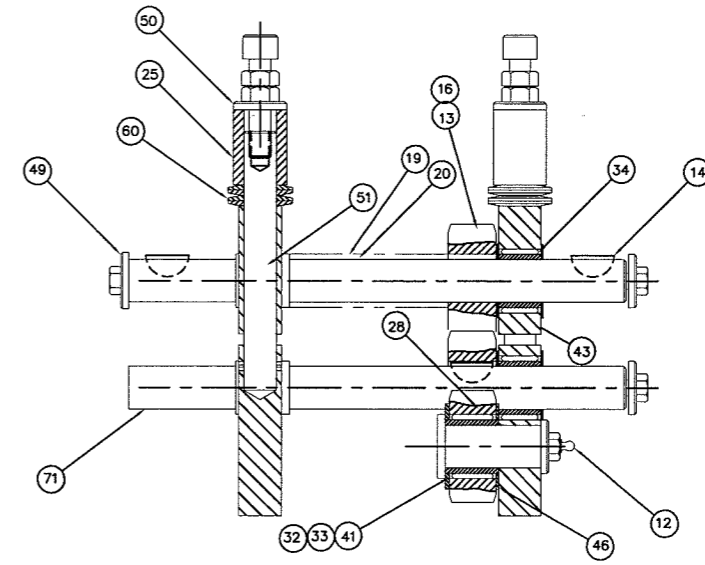
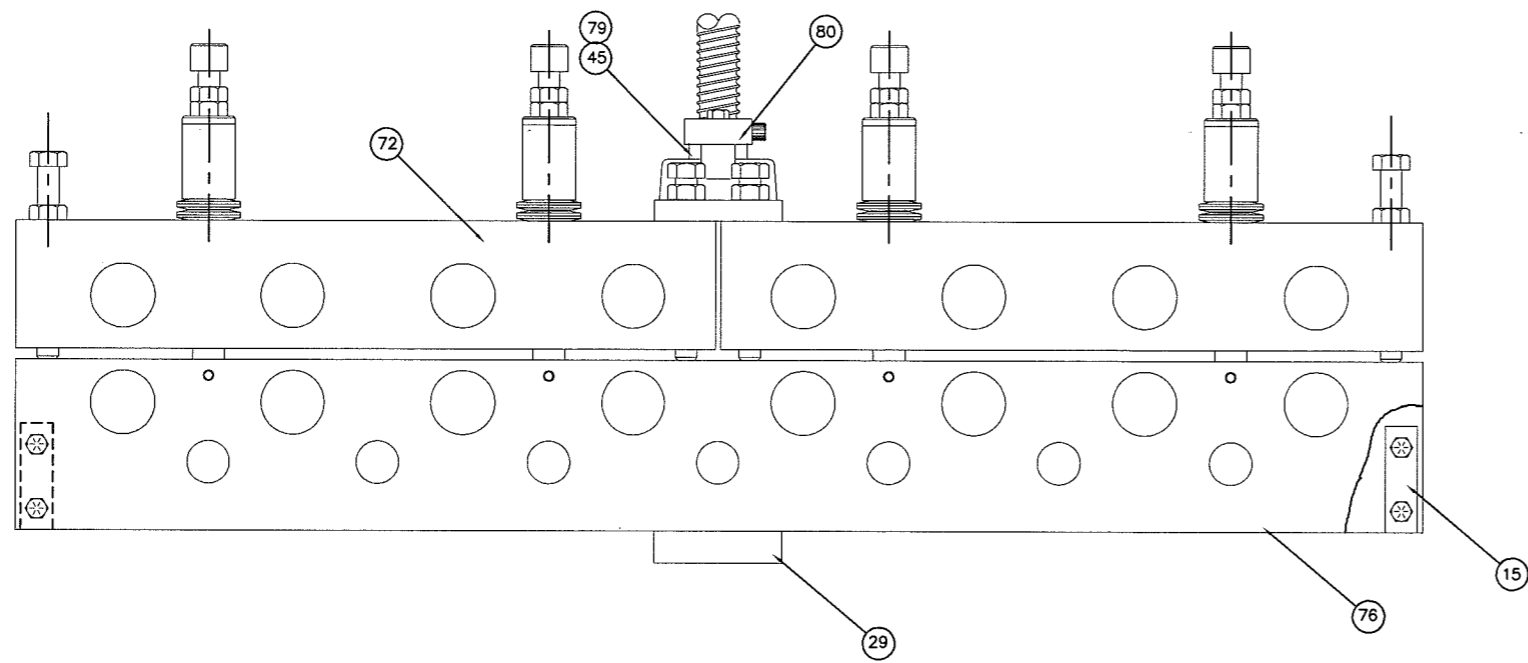
Cedar Rapids, Iowa 52404
IOWA PRECISION
© 2003
TITLE: FINAL ASSY 800TT-TA

DRAWN BY: S. KERSKA DATE: 02/13/10 SCALE: CHECKED BY:
NEXT HIGHER USAGE NO. QTY TEMPLATE NO/REVISE NO.

529-0018-01-00 SHEET 1 OF 2

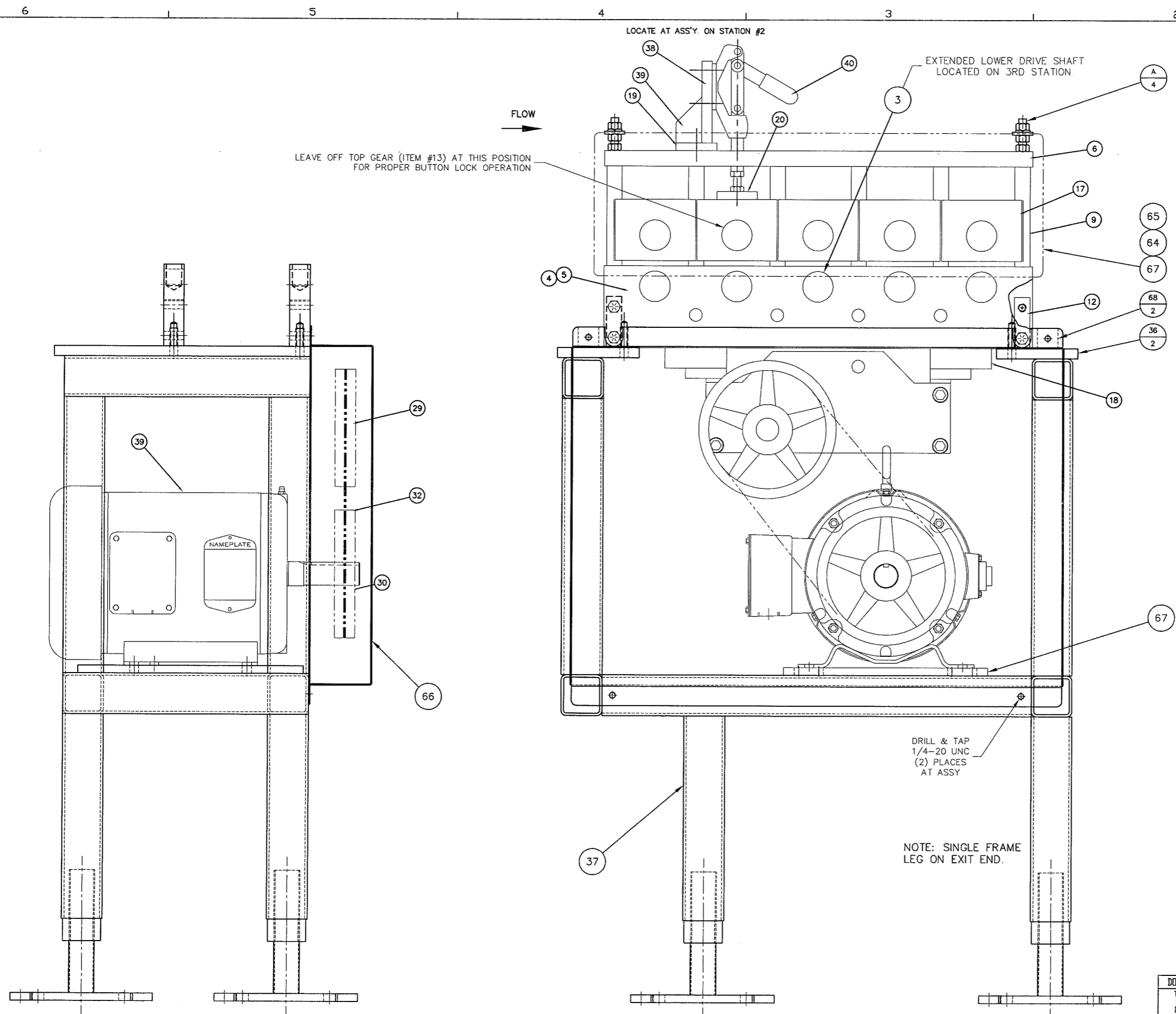
ISSUE: 10/22/02 4:27 P.M.

REVISION	NAME-DATE
A	S KERSKA 04/09/2010



DO NOT SCALE	ITEM	ITEM QTY	STOCK NO.	DESCRIPTION	QTY EACH
TOLERANCES SPECIFIED BY DECIMAL PLACES	IOWA PRECISION Cedar Rapids, Iowa 52404				TITLE
.0 ±.050					FINAL ASSY 800TT-TA
.00 ±.025					
.000 ±.005	DRAWN BY	DATE	SCALE	DESIGNED BY	
ANGLES ±.5°	S KERSKA	02/13/10	--		
	NEXT HIGHER USAGE NO.	QTY	TOPPLATE NO/FEATURE NO		
	--	--	--		
					SHEET 2 OF 2
					529-0018-01-00
					REV: 10/02/10 4:22 pm

REVISION	NAME-DATE
A	ADD 7895-9 04/18/2010
B	528-0001 WAS 593193 04/18/2010
C	4211-H QTY WAS 10; ADD 4688-2 05/28/2010



ITEM	QTY	STOCK NO.	DESCRIPTION	QTY EACH
66	1	528-0001-01-00	BELT GUARD MM-500T	EA
65	1	593188-R	GUARD,INFEED FGR,800T W/CYL	EA
64	1	593192-R	GUARDS,OUTFEED FINGER,M-800T,R	EA
63	1	9851-1	IDLER SHAFT SPACER - .775 LG.	EA
62	1	9851	IDLER SHAFT SPACER-.220 LG.	EA
61	1	9850	IDLER SHAFT-3 PINION RED.(N/S)	EA
60	1	573015	63/64 EXT. RETAINING RING	EA
59	1	511196	STEEL THRUST WASHER - TRC2031	EA
58	4	511157	BEARING WITH OIL HOLE - JH1612	EA
57	1	511108	STEEL THRUST WASHER - TRB2031	EA
56	2	511102-1	NEEDLE BEARING W/ OIL HOLE	EA
55	5	511096	STEEL THRUST WASHER TRA1625	EA
54	2	511094	STEEL THRUST WASHER TRA1423	EA
53	1	511076-H	INNER RACE - HONED (1 X 1.25)	EA
52	1	511018-1	BEARING WITH OIL HOLE	EA
51	2	4241	PINION CHASSIS SIDE PLATE	EA
50	1	4213	G26 SPUR GEAR	EA
49	1	4210-1	IDLER GEAR	EA
48	1	4182	#4 SPEED REDUCER PINION	EA
47	1	4181	PINION-#3 SPEED REDUCER	EA
46	1	4178	#3 PINION PRIMARY DRIVE	EA
45	2	4174-1	MOUNT, SPEED REDUCER	EA
44	2	4170	#15 WOODRUFF KEY 1/4, GROUND	EA
43	1	4159-H	G-27 SPUR GEAR W/ HEAT TREAT	EA
42	1	4149	SPACER	EA
41	1	4148	NUMBER 3 SPACER PINION	EA
40	1	4147	SPACER	EA
39	1	501031	MOTOR,5HP,208-460/3/60,TEFC,18	EA
38	4	9512	IDLER SHAFT	EA
37	1	7896-3	500-T FRAME	EA
36	2	7895-12	BOLT PAD 500T MOUNT	EA
35	2	7568	1 1/4 PILLOW BLOCK	EA
34	1	592548	LC - PAD	EA
33	20	571033	ROLEX DISC SPRING (.049)	EA
32	1	562095	V-BELT 4L380 (A36)	EA
31	1	514376	SPROCKET(1 EA.1/4" & 3/16" KEY	EA
30	1	512014-1	PULLEY	EA
29	1	512014	PULLEY BK70 X 7/8	EA
28	4	511196	STEEL THRUST WASHER - TRC2031	EA
27	17	511195	1 1/4 END CAP WASHER	EA
26	10	511193	1 3/4 END CAP WASHER	EA
25	4	511108	STEEL THRUST WASHER - TRB2031	EA
24	20	511078	AMPLEX WASHER (TT1709-01)	EA
23	14	511076-H	INNER RACE - HONED (1 X 1.25)	EA
22	10	511019-H	INNER RACE - HONED (1 X 1)	EA
21	4	511018-1	BEARING WITH OIL HOLE	EA
20	20	511018	BEARING (B2016)	EA
19	4	4994-1	IDLER GEAR	EA
18	2	4979	SPEED REDUCER MOUNT PLATE	EA
17	10	4975	TOP BRG CAGE	EA
16	8	4615-1	SPINDLE SHAFT TANDEM HEAD	EA
15	10	4267-4	SPACER - 3.750 LG.	EA
14	10	4234-1	ADJUSTING SPOOL	EA
13	9	4211-H	19T-GEAR (HARD) 2 3/4 RD X 1.1	EA
12	2	4173-3	SPREADER	EA
11	10	4171	#11 WOODRUFF KEY 3/16, GROUND	EA
10	10	4170	#15 WOODRUFF KEY 1/4, GROUND	EA
9	12	4167-1	POST,SPNDL HSGNG,3/8-24 THD, 6.	EA
8	2	4166-5	SPREADER HEAD RAIL	EA
7	4	4165-1	GREASE BOLT **** (3/8-24 X 3/	EA
6	2	11546	HEAD RAIL - 500-T ROLL MACH.	EA
5	1	11545-2	500-T NON-GEAR SPINDLE HSGNG	EA
4	1	11545-1	500-T SPINDLE HSGNG. GEAR-SIDE	EA
3	1	11496	SPINDLE-CONVEY. DRIVE 800TT-TA	EA
2	1	1088703	WELDMENT- HELPER BRACKET	EA
1	2	1073056	PILLOW BLOCK SUPPORT	EA

70	1	4688-2	SPCR 1ID X 1 1/200 X 1 1/8LG 1	EA
69	1	528-0002-01-00	HOOD MM-500T W/Q-S CYL - RIGHT	EA
68	2	011-0165-01-00	MOUNTING PAD 1/4-20	EA
67	1	7895-9	MOTOR MOUNTING BASE	EA

DO NOT SCALE

TOLERANCES SPECIFIED BY DECIMAL PLACES

.0 ±.050*

.00 ±.025*

.000 ±.005*

ANGLES ±.5°

ITEM 4

ST-TR-00375003

THREADED ROD 3/8-24 UNF X 6FT

3.12

ITEM QTY STOCK NO. DESCRIPTION

QTY EACH

Cedar Rapids, Iowa 52404

TITLE

IOWA PRECISION

© 2003

FINAL ASSY 500T

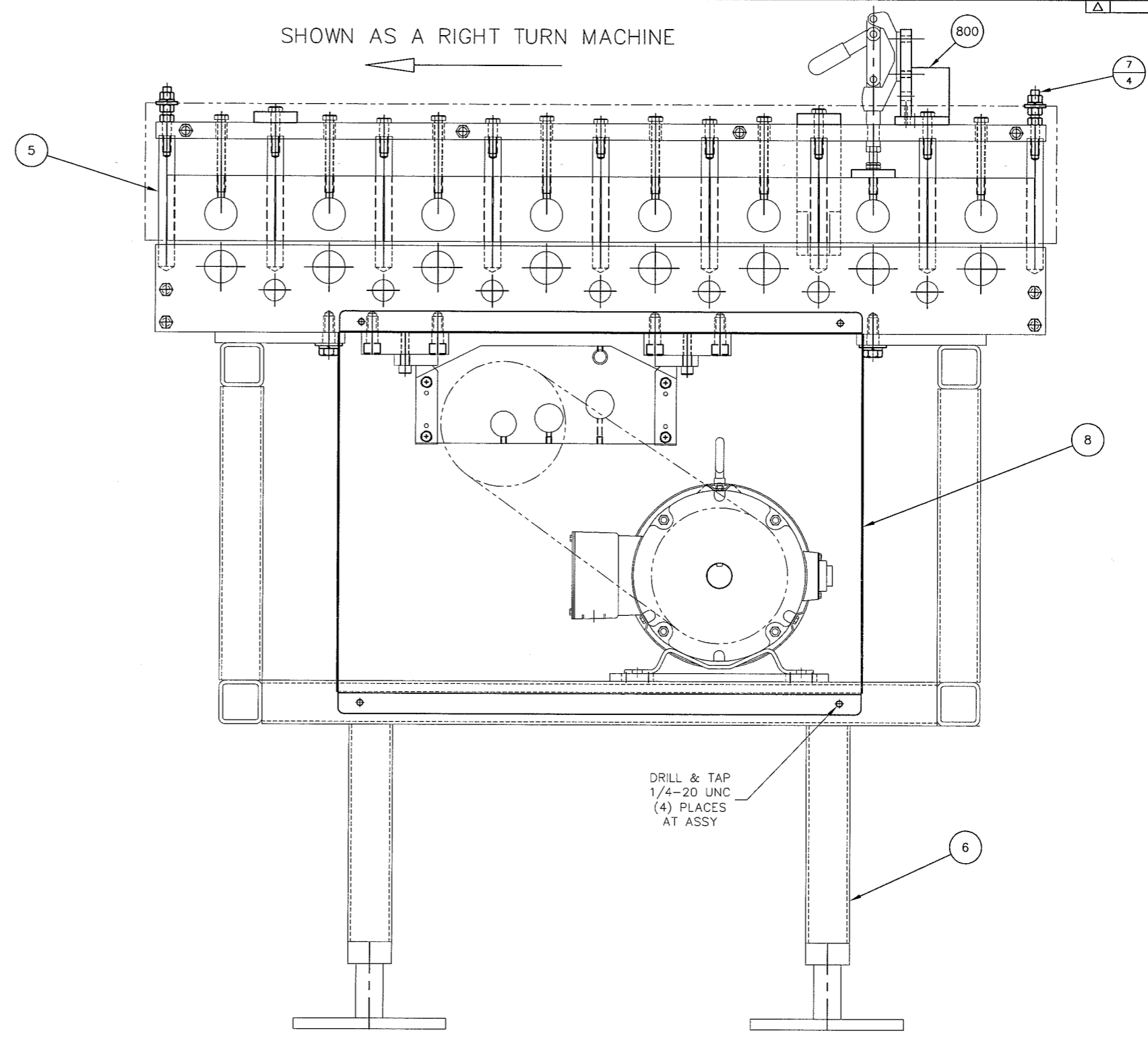
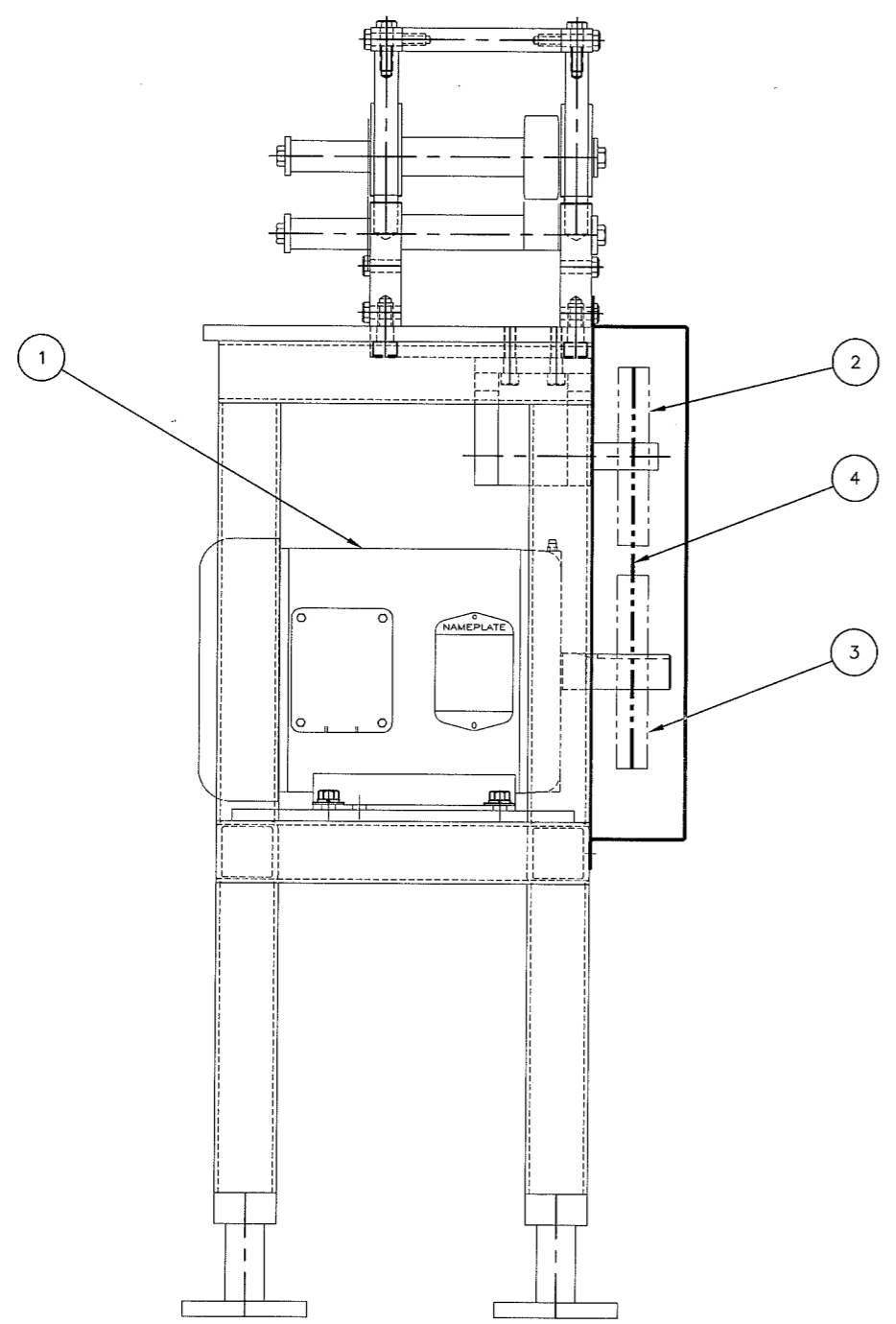
DRAWN BY S KERSKA DATE 02/13/10 SCALE - CHECKED BY

NEXT HIGHER USAGE NO. QTY. TEMPLATE IDENTIFICATION NO.

529-0019-01-00

SHEET 1 OF 2

SHOWN AS A RIGHT TURN MACHINE



		LINE DIRECTION	TOP HOOD OPTION			
HAND OPERATED	RIGHT TURN	803	1	593190-R	HOOD, M800T W/RS HANDLE, RIGHT	EA
	LEFT TURN		1	593190-L	HOOD FOR M-800T W/RS HANDLE, L	EA
AIR CYLINDER	RIGHT TURN		1	593187-R	HOOD, M-800T W/AIR CYL., RIGHT T	EA
	LEFT TURN		1	593187-L	HOOD FOR M-800T W/AIR CYL., LEFT	EA

		LINE DIRECTION	INFEEED GUARD OPTION			
HAND OPERATED	RIGHT TURN	802	1	593191-R	GUARD, INF. FINGER, M800T W/HDL,	EA
	LEFT TURN		1	593191-L	GUARD, INF. FINGER, M800T W/HNDL	EA
AIR CYLINDER	RIGHT TURN		1	593188-R	GUARD, INFEEED FGR., 800T W/CYL,	EA
	LEFT TURN		1	593188-L	GUARD, INFEEED FGR., 800T W/CYL.	EA

		ROLL SET OPTION			
STD 20GA BUTTNLCK	804	1	MR-MB-20T	20 GA MBL ROLLS FOR USE W/800T	EA

		LINE DIRECTION	OUTFEED GUARD OPTION			
RIGHT TURN	801	1	593192-R	GUARDS, OUTFEED FINGER, M-800T, R	EA	
		1	593192-L	GUARDS, OUTFEED FINGER, M800T, LE	EA	

		LANCE KNIFE ACTUATION OPTION			
HAND OPERATED	800	1	M-QS-800T-HO	HND OPER. LANCE KNIFE BYPASS -	EA
AIR CYLINDER		1	MM-QS-800T	AIR SET LANCE KNIVES-800T	EA

ITEM	QTY	STOCK NO.	DESCRIPTION	QTY EACH
8	1	593193	GUARD, BELT FOR M-800-T	EA
7	4	4221	STUD, GUARD	EA
6	1	529-0024-01-00	FRAME WELDMENT 800T	EA
5	1	529-0023-01-00	SPINDLE HOUSING ASSY M-800T-F-	EA
4	1	562054	V BELT B43 (5L460)	EA
3	1	512014-1	PULLEY	EA
2	1	512014	PULLEY BK70 X 7/8	EA
1	1	501031	MOTOR, 5HP, 208-460/3/60, TEFC, 18	EA

DO NOT SCALE
TOLERANCES SPECIFIED BY DECIMAL PLACES
.0 ±.050"
.00 ±.025"
.000 ±.005"
ANGLES ±.5°

DRAWN BY T COON DATE 03/23/2010 SCALE -- CHECKED BY --
NEXT ISSUE USAGE NO. -- QTY -- TYPICAL PARTURE NO. --

Cedar Rapids, Iowa 52404 © 2003
IOWA PRECISION TITLE FINAL ASSY 800T

529-0025-01-00 SHEET 1 OF 1